

SECTION 106 EFFECTS MEETING



The Louisville - Southern Indiana
Ohio River Bridges Project
(LSIORBP)

November 18, 2011

1

Meeting Agenda



1. Welcome/Introductions
2. Section 106 Process
3. Recap of Section 106 Consultation to date
4. Effects Methodology: Original APE
5. Effects Recommendations: Original APE
6. Effects Methodology: Extensions to APE
7. Effects Recommendations: Extensions to APE
8. Archaeology
9. Next Steps
10. Comment and Discussion Period

2

1. WELCOME/INTRODUCTIONS

Ground Rules

PLEASE

- Treat everyone with respect
- Listen to each other – keep an open mind
- Do not interrupt
- Be succinct
- Do not monopolize
- Be on time to meetings
- Stay on topic – effects on historic resources

2. SECTION 106 PROCESS

5

Section 106

- Set out in the National Historic Preservation Act (NHPA)
- Requires Federal agencies to:
 - Take into account the effects of Federal agency actions on historic properties
 - Afford the Advisory Council on Historic Preservation (ACHP) an opportunity to comment
- Is grounded in consultation among stakeholders of the project
- Regulations at 36 CFR Part 800

6

Section 106 Steps



- Initiate Consultation
- Establish Area of Potential Effect (APE) and Identify Historic Properties
- **Assess Effects**
- Resolve Adverse Effects

7

Recent Materials



- Identification Findings Report (Nov 3)
Revised Identification Workbook, incorporating changes suggested through eligibility meeting & consultation
- Effects Recommendations (Nov 3)
Preliminary Effects Findings – request comments by Dec 5
- Draft 800.11(e) Report (Nov 4)
Official Eligibility & Effects Determinations from FHWA – request comments by Dec 5
- Supplemental Draft EIS (Nov 25)
Available online now – request comments by Jan 9

8

Adverse Effect in Section 106



Adverse Effect

- Alteration to the characteristics of a historic property qualifying it for inclusion in or eligibility for the NRHP
- Diminishes property's location, design, setting, materials, workmanship, feeling, or association
- Direct or Indirect

9

Consulting Party Responsibilities



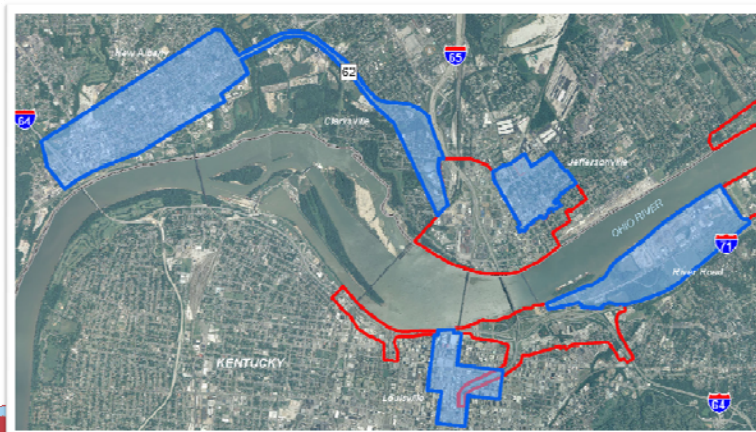
- Attend and Participate in meetings
- Provide input on the identification, eligibility, effects, and mitigation of effects on historic resources as part of the SEIS
- Provide input in writing after receipt of materials or letters within established time frames
- Provide input into the development and execution of an amended MOA, if necessary, in conjunction with the SEIS

10

3. RECAP OF SECTION 106 CONSULTATION TO DATE

Defining APE

- Area of Potential Effects (APE) defined
 - Original APE (red) – same as in 2003 FEIS
 - Extensions to the APE (blue) – added in 2011



Eligible Resources – Original APE



- NRHP Listed and Eligible Resources identified in the Original APE
- Key changes since 2003:
 - Swartz Farm HD eliminated
 - Quarries added to Utica Lime Kilns Group
 - Multiple Property Group: Ohio River Camps added
 - Mockingbird Valley HD listed on NRHP
 - Woodhill Valley Place HD added
 - Other newly added sites: Benton-Jacobs House, Kirzinger House, Stone Place Stables

13

Alternatives Considered



Comparison of Two Alternatives

- **FEIS Selected Alternative**
 - Minor design updates since 2003 publication
 - New 6 lane East End Bridge & Approaches
 - New I-65 Bridge downtown (with bike/ped link)
 - Kennedy Interchange shifted to south
- **Modified Selected Alternative**
 - New 4 lane East End Bridge & Approaches
 - New I-65 Bridge downtown (without bike/ped link)
 - Kennedy Interchange rebuilt in place
 - Tolling on East End & I-65 Bridges

14

Traffic Model Updates



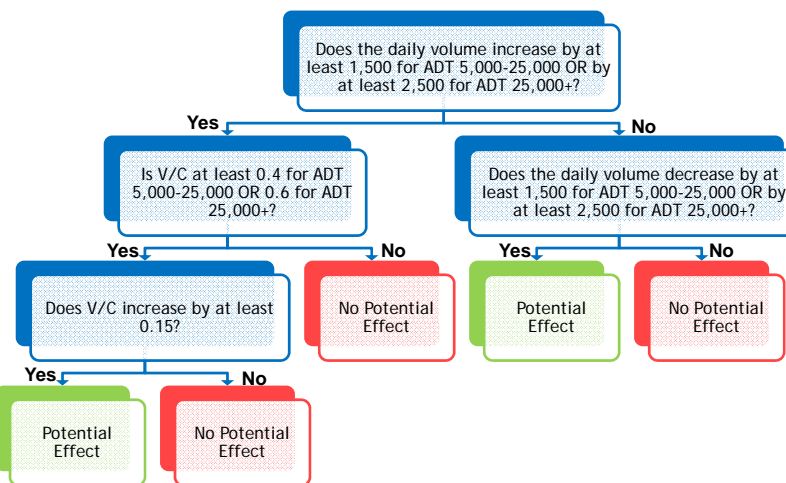
- Original analysis used KIPDA Daily Model
- Developed new Time-of-Day (TOD) Model
 - Split into TOD Structure
 - Updated Traffic Data
 - Added Truck Model
 - Updated Socioeconomic Data
 - Updated Transit Model
- TOD Model is basis for traffic analysis & forecasts
- Helps understand regional changes in travel patterns resulting from design changes & tolling
- Traffic info will be included as DSEIS appendix

15

APE Screening: High Volume Roads



ADT > 5,000

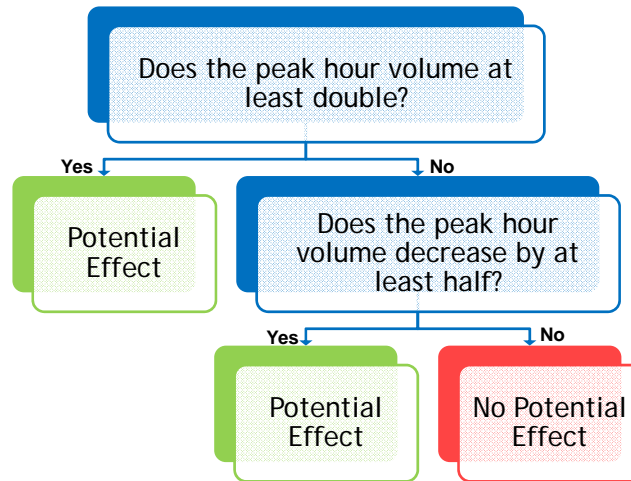


16

APE Screening: Low Volume Roads



ADT < 5,000



17

Eligible Resources – Extensions to APE



- All properties 45 years in age and older in the Extensions to the APE will be treated as eligible for the purposes of the Project
- Because these areas are farther from the Project, any effects would be indirect (due to changes in traffic patterns) rather than direct

18

Recent Section 106 Materials



- Identification Findings Report (Nov 3)
Revised Identification Workbook, incorporating changes suggested through eligibility meeting & consultation
- Effects Recommendations (Nov 3)
Preliminary Effects Findings – request comments by Dec 5
- Draft 800.11(e) Report (Nov 4)
Official Eligibility & Effects Determinations from FHWA – request comments by Dec 5

19

Consulting Party Comments



APE/Eligibility comments received from 10 consulting parties during October

General Comments

- Extend APE to cover full districts and fill in gaps
- Requests for additional traffic & economic data
- Specific sites identified for further study or clarification
- Various corrections to draft workbook

20

4. EFFECTS METHODOLOGY: ORIGINAL APE

Original APE: Effects Methodology

Encroachment

- Permanent right-of-way acquisition or temporary construction easement
- Maps in Effects Recommendations Document (pages 5-11) compare encroachment for both alternatives

Original APE: Effects Methodology



Noise

- 2003 FEIS considered 2025 Build traffic scenario
- Since 2003, FHWA has issued new noise model & guidance
- New traffic forecasts were developed for the 2030 Build scenario for both alternatives
- 2030 traffic volumes were applied to the new TNM2.5 noise model to evaluate potential effects on historic properties within 800 ft of Project and identify properties where noise impacts occur (exceed NAC or 5 dBA increase)
- A 3 dBA change is threshold for human perception
- Traffic must double to increase noise by 3 dBA

23

Original APE: Effects Methodology



Visual

- Considered for resources within 2 miles of the Project
- Does proximity to the Project result in relatively unobstructed views in a way that diminishes the historic property's setting or feeling?
- Would light dispersion from the Project reach the historic property?

24

Vibration

- In 2003, analysis was conducted based on FTA Guidance Manual to consider 3 kinds of vibration
 - Traffic-induced: 30-130 ft thresholds for annoyance set for each section based on soil types and pier sizes
 - Non-Blasting Construction-induced: 40 ft threshold
 - Blasting-induced: 500 ft threshold
- Lower traffic volumes projected in 2030 Build scenario than previously analyzed for the 2025 Build scenario, which represents a “worse case”

Air Quality

- Project included in KIPDA Long Range Plan & Transportation Improvement Program (TIP), which demonstrates conformity with ozone & particulate matter (PM_{2.5}) standards
- Hot spot analyses conducted for carbon monoxide (CO) and results below NAAQS
- Project level qualitative hot spot analysis for PM_{2.5}
- Mobile Source Air Toxics (MSAT) qualitative analysis performed for Project

Construction

- Only impacts are temporary impacts from staging areas, borrow pits, waste areas, noise, nighttime lighting, air emissions, traffic alterations
- Permanent impacts are summarized in previous categories

**5. EFFECTS DETERMINATIONS:
ORIGINAL APE**

Refer to Effects Recommendations Document

Effects in Original APE



- Same findings as identified in 2003 FEIS except ...
 - Spring St Freight House (NAE)
 - Thomas Benton Jacobs House (NE)
 - Mockingbird Valley HD (NE)
 - Woodhill Valley Rd HD (NE)
 - Shady Brook/T. Mueller House (NAE)
 - Kerzinger House (NE)
 - Stone Place Stables (NE)
 - Multiple Property Group: Ohio River Camps (30 NE, 8 NAE, 8 AE)

NE = No Effect / NAE = No Adverse Effect / AE = Adverse Effect

29



6. EFFECTS METHODOLOGY: EXTENSIONS TO THE APE

30

Encroachment

- No impacts in Extended APE, which will not experience direct effects

Construction

- No impacts in Extended APE, which will not experience direct effects

Air Quality

- Regional analysis discussed in Original APE section – no impacts projected

Visual

- Are forecasted changes in traffic visibly perceptible (defined as 1-2 cars per minute per lane during the peak hour)?
- Does the change in traffic affect the character of the district/subarea in such a way to diminish its significance?

Noise

- Does the change in traffic lead to a doubling of traffic, which would result in a 3 dBA increase in noise (threshold for human perception)?
- Do changes in noise impact the setting of the district/subarea in a way that diminishes its integrity?

Vibration

- Are there changes in heavy truck traffic patterns which could lead to ground-borne vibration?

7. EFFECTS DETERMINATIONS: EXTENSIONS TO APE

Refer to Effects Recommendations Document

Effects in Extensions to the APE



SubArea	Visual	Noise	Vib.	Finding
Jeffersonville	NE	NE	NE	No Effect
Clarksville/SR 62	NAE	NE	NE	No Adverse Effect
New Albany	NAE	NE	NE	No Adverse Effect
Downtown Louisville	NAE	NE	NE	No Adverse Effect
River Road	NAE	NE	NE	No Adverse Effect

NE = No Effect / NAE = No Adverse Effect / AE = Adverse Effect

35



8. ARCHAEOLOGICAL SITES

36

Site	Description	National Register Eligibility Determination	Effect
INDIANA			
12-CL-559	East End: Historic Site Associated with Farmstead	Additional Investigations Required Before Eligibility Can Be Determined	Within footprint – direct effects
12-CL-561	East End: Historic Site Associated with Lime Industry	Potentially Eligible; Additional Investigations Required	Outside footprint – no direct effect
N/A	Downtown: Associated with Spring Street Freight House	Investigations Required Before Eligibility can be Determined	Outside footprint – no direct effect
KENTUCKY			
15Jf677	East End: Prehistoric Site	Potentially Eligible; Additional Investigations Required	Outside footprint – no direct effect
15Jf678	East End: Prehistoric Site	Phase 1 Investigations Conducted in 2006, Phase 2 Required before Eligibility Can Be Determined, Pending Right of Entry	Within footprint – direct effects
15Jf679	East End: Prehistoric Site, Historic Site Associated with Rosewell Plantation	Contributing Element to the National Register Property; Phase 1 Investigations Conducted in 2006, Phase 2 Required before Eligibility Can Be Determined, Pending Right of Entry	Within footprint – direct effects

37

Site	Description	National Register Eligibility Determination	Effect
KENTUCKY			
15Jf680	East End: Prehistoric Site	Potentially Eligible; Additional Investigations Required	Outside footprint – no direct effect
15Jf683	East End: Historic Site Associated with Allison-Barrickman Plantation	Contributing Element to National Register Property; Additional Investigations Required	Outside footprint – no direct effect (No Adverse Effect)
15Jf717	Downtown: Historic Site from mid-1800s to the present	Eligible; Phase 3 Data Recovery Completed in 2008; No further work required	Within footprint – direct effects
15Jf718	Downtown: Historic Site from mid-1800s to the present	Eligible; Phase 3 Data Recovery Completed in 2008; No further work required	Within footprint – direct effects
15Jf719	East End: Historic Complex	Phase 1 Investigations Conducted in 2006, Phase 2 Required before Eligibility Can Be Determined, Pending Right of Entry	Within footprint – direct effects
15Jf720	East End: Prehistoric Site	Phase 1 Investigations Conducted in 2008. Site Potentially Eligible	Within footprint – direct effects; Add'l coordination

38

9. NEXT STEPS

39

Next Steps

- Provide any comments on the Effects Recommendations Document by Dec. 5
- Provide any comments on the Draft 800.11(e) Report by Dec. 5
- Next 106 Meeting: Development of Mitigation Measures - tentatively set for Dec. 15
- Draft Supplemental EIS (available online) request comments by Jan. 9
- Public Hearings tentatively set for Dec. 19 & 20

106 Materials online at <http://kyinbridges.com/public-involvement/group-sec106.aspx>

40

10. COMMENT AND DISCUSSION PERIOD

41

Thank you for your participation today!
If you have comments or concerns, please return them by
December 5, 2011

To:

Ms. Janice Osadczuk
Engineering Services Team Leader
Federal Highway Administration - Indiana Division
Room 254, Federal Office Building
575 North Pennsylvania Street
Indianapolis, Indiana 46204
Janice.Osadczuk@dot.gov

42