

SECTION 106 MEETING



The Louisville - Southern Indiana
Ohio River Bridges Project
(LSIORBP)

June 1, 2011

MEETING AGENDA

1. Welcome
2. Introductions
3. Consulting Party Expectations
4. Project History
5. Potential Changes to the Project
6. 2003 Area of Potential Effect (APE)
7. Next Steps
8. Comment and Discussion Period

1. WELCOME

GROUND RULES

PLEASE

- Treat everyone with respect
- Listen to each other – keep an open mind
- Do not interrupt
- Be succinct
- Do not monopolize
- Be on time to meetings
- Stay on topic – historic resources

2. INTRODUCTIONS

LEAD AGENCIES

- FHWA – Federal lead agency
- KYTC – Joint State lead agency
- INDOT – Joint State lead agency

2003 MOA RELATED GROUPS



- Bi-State Historic Consultation Team (BSHCT)
 - Representatives from FHWA, INDOT, KYTC and each state's State Historic Preservation Office (SHPO)
 - Role is to advise BSMT in compliance with historic commitments
 - SHPOs designated as Participating Agency
- Historic Preservation Advisory Teams (HPATs)
 - Indiana (IHPAT) and Kentucky (KHPAT) Teams
 - Meet bi-monthly

3. CONSULTING PARTY EXPECTATIONS

SECTION 106



- Set out in the National Historic Preservation Act (NHPA)
- Requires Federal agencies to:
 - Take into account the effects of Federal agency actions on historic properties
 - Afford the Advisory Council on Historic Preservation (ACHP) an opportunity to comment
- Is grounded in consultation among stakeholders of the project
- Regulations at 36 CFR Part 800

BASIC REGULATORY PHILOSOPHY



- Integrates historic preservation in balancing full range of public values
- Historic values are public values to be weighed along with mission needs
- Encourages creativity and common-sense approach to problem solving
- Should be initiated early in the initial stages of project planning

PARTICIPANTS

- Federal agencies
- Advisory Council
- Consulting Parties - SHPO/THPO/Tribe, applicants, local government, Tribes who attach religious and cultural significance, additional consulting parties
- Public

SECTION 106 STEPS

- Initiate Consultation
- Establish Area of Potential Effect (APE), Identify Historic Properties
- Assess Effects
- Resolve Adverse Effects

CONSULTING PARTY RESPONSIBILITIES



- Attend and Participate in meetings
- Provide input on the identification, eligibility, effects and mitigation of effects on historic resources as part of the SEIS
- Provide input in writing after receipt of materials or letters within established time frames
- Provide input into the development and execution of a revised MOA, if necessary, in conjunction with the SEIS

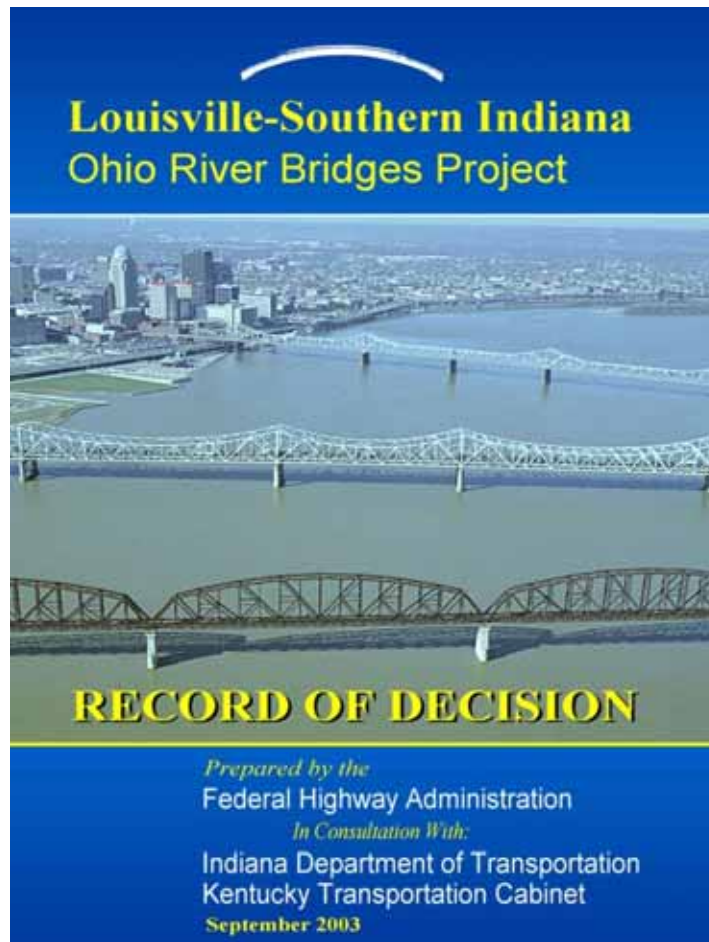
GROUND RULES

PLEASE

- Treat everyone with respect
- Listen to each other – keep an open mind
- Do not interrupt
- Be succinct
- Do not monopolize
- Be on time to meetings
- Stay on topic – historic resources

4. PROJECT HISTORY

SEPTEMBER 2003 RECORD OF DECISION



1998

Original Notice of Intent

September 6, 2003

Record of Decision (ROD)

THE BRIDGES PROJECT



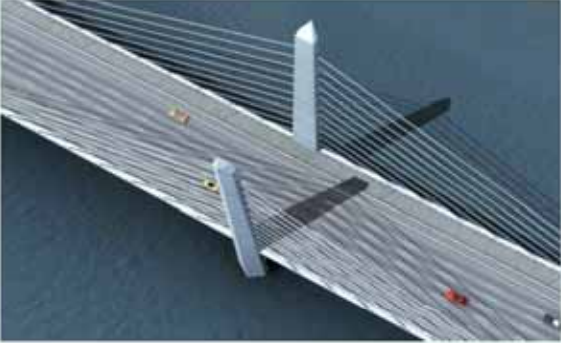
SECTION 1

Section 1 – Kennedy Interchange Downtown Kentucky



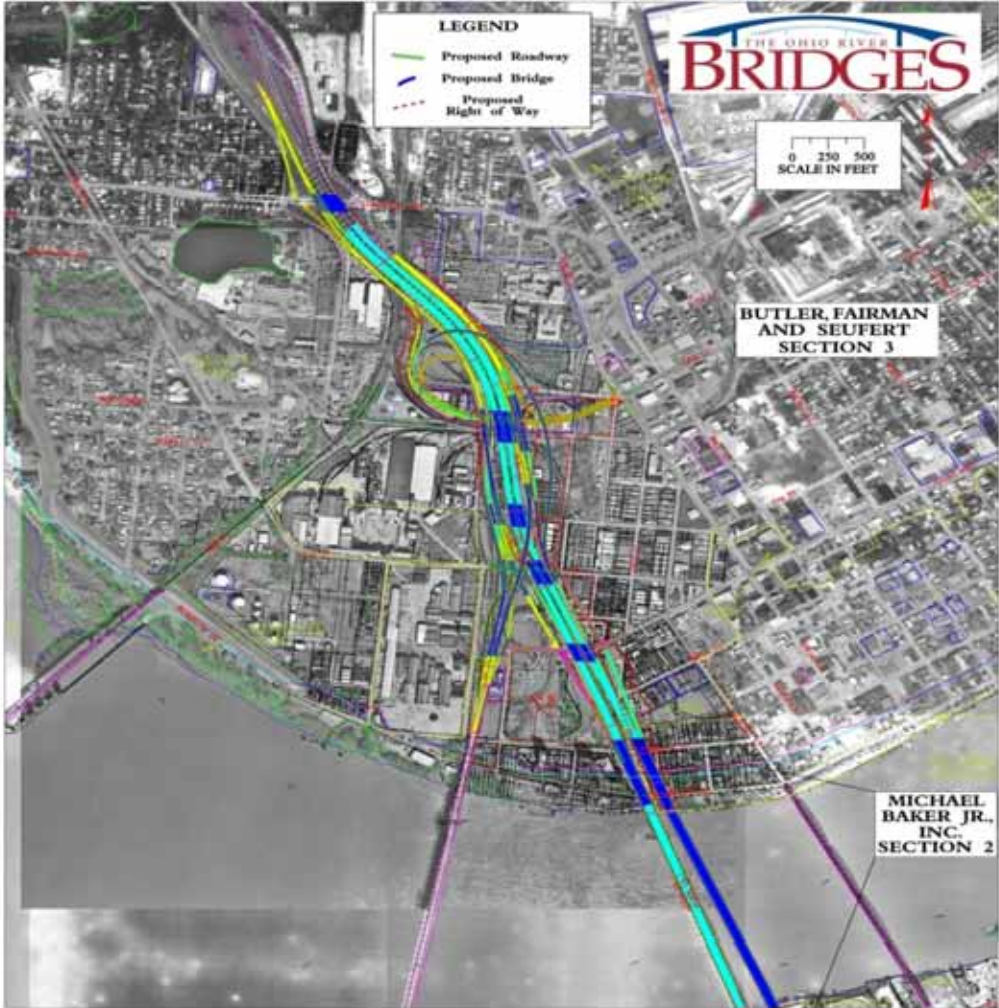
SECTION 2

Section 2 – Downtown Bridge



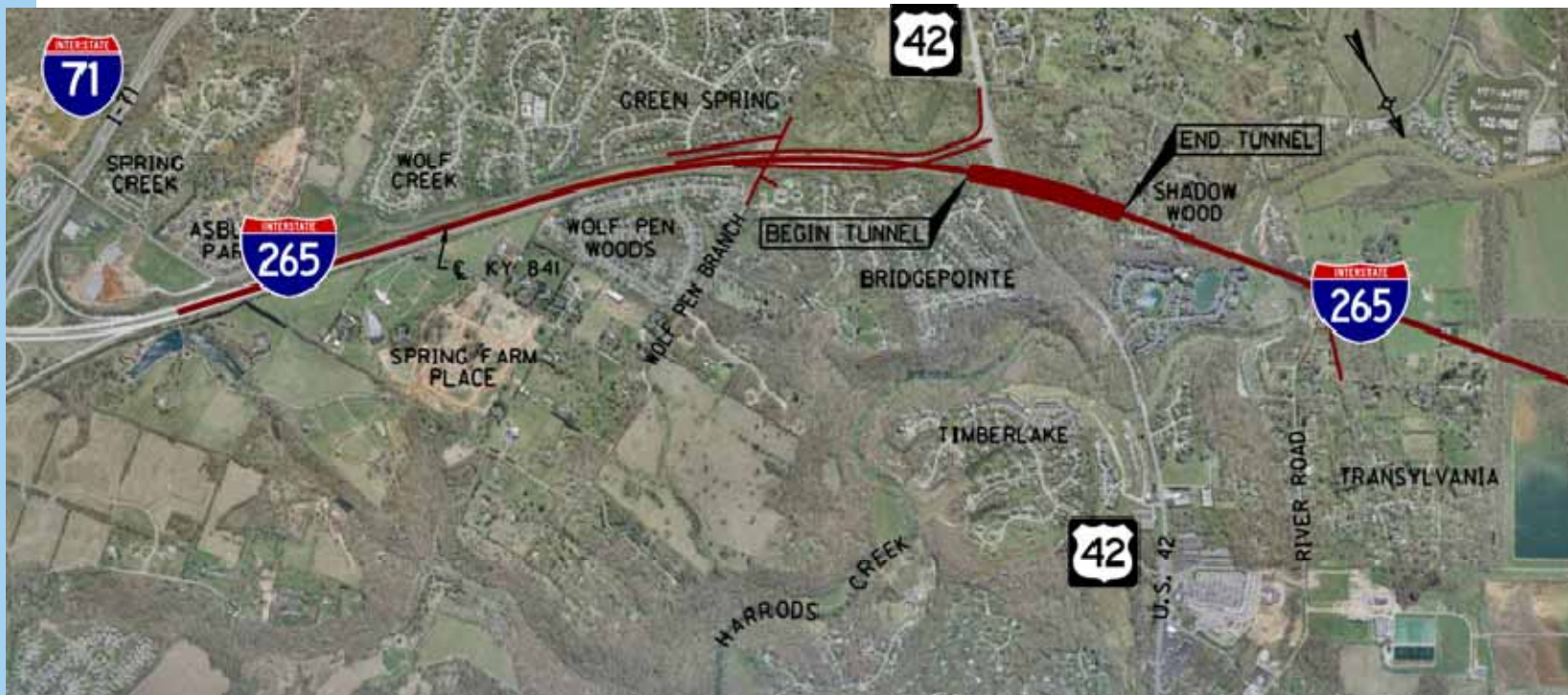
SECTION 3

Section 3 –
Downtown
Indiana



SECTION 4

Section 4 – East End Kentucky

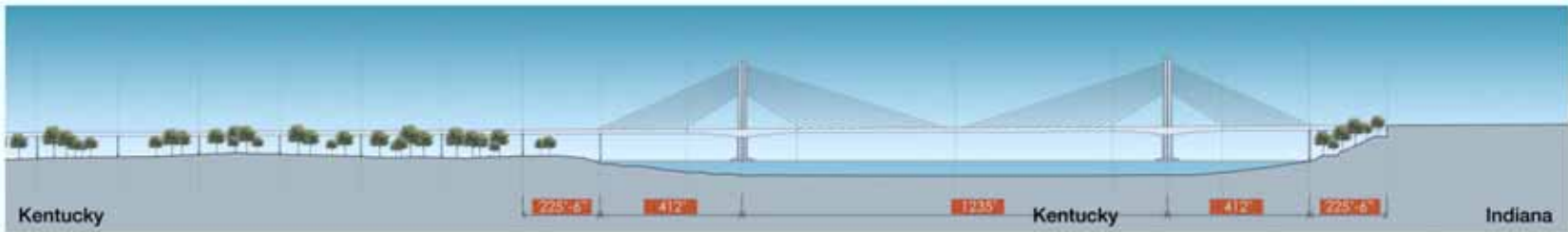


SECTION 5

Section 5 – East End Bridge



The East End Bridge has center piers so that drivers and pedestrians have unobstructed views.



SECTION 6

Section 6 – East End Indiana



MOA COMMITMENTS STATUS



- Indiana and Kentucky Historic Preservation Advisory Teams (IHPAT and KHPAT) formed
- Bi-State Historic Consultation Team (BSHCT) created
- Kentucky and Indiana Ombudsmen hired
- Smart Growth Conference held (2006)

MOA COMMITMENTS STATUS - KY



- Develop Historic Preservation Plans (HPPs)
 - Phoenix Hill (completed)
 - Country Estates of River Road (completed)
 - Butchertown (ongoing)
- Update of Jefferson County Survey of Historic Sites (completed)
- Develop Treatment Plans
 - Grocers Cold Ice and Storage (completed)
 - Vermont American (ongoing)
- Stabilize Rosewell (ongoing)

MOA COMMITMENTS STATUS - IN



- Develop Historic Preservation Plans (HPPs)
 - Old Jeffersonville Historic District (completed)
 - Utica Historic Lime Industry (ongoing)
- Acquire and Rehabilitate Spring Street Freight House (Train Depot) – construction initiated
- Obtain NRHP nomination for Ohio Falls Car & Locomotive (completed)
- Seek NHRP nomination for Colgate – Palmolive
- Preserve James M. Smith farm (owner declined)

5. POTENTIAL CHANGES TO THE PROJECT

Tolling



KENNEDY INTERCHANGE

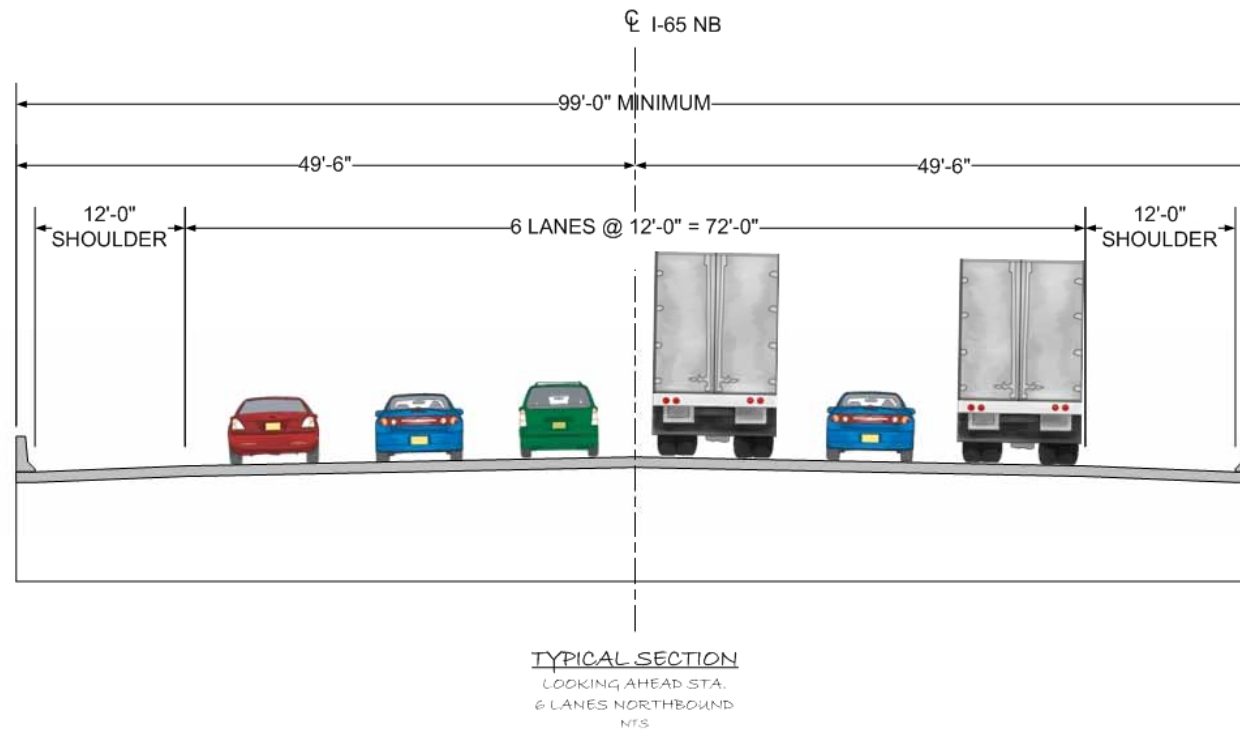
Modified in-place Alternative



DOWNTOWN BRIDGE PROPOSED

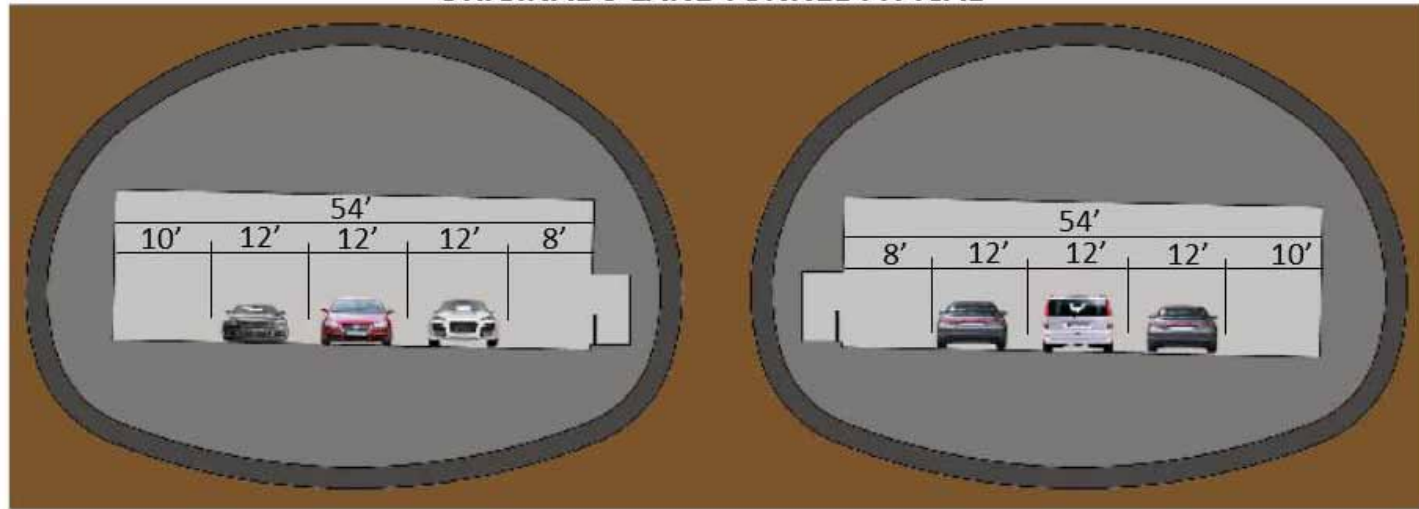


Bridge Cross Section without Pedestrian Walkway/Bikeway

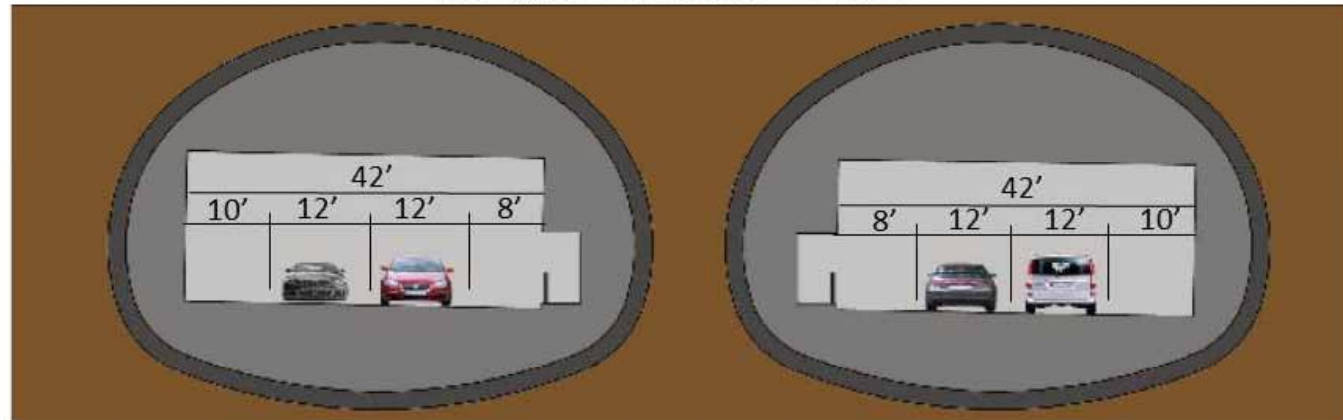


EAST END TUNNEL - TYPICAL SECTION

ORIGINAL 6-LANE TUNNEL TYPICAL



REDUCED 4-LANE TUNNEL TYPICAL

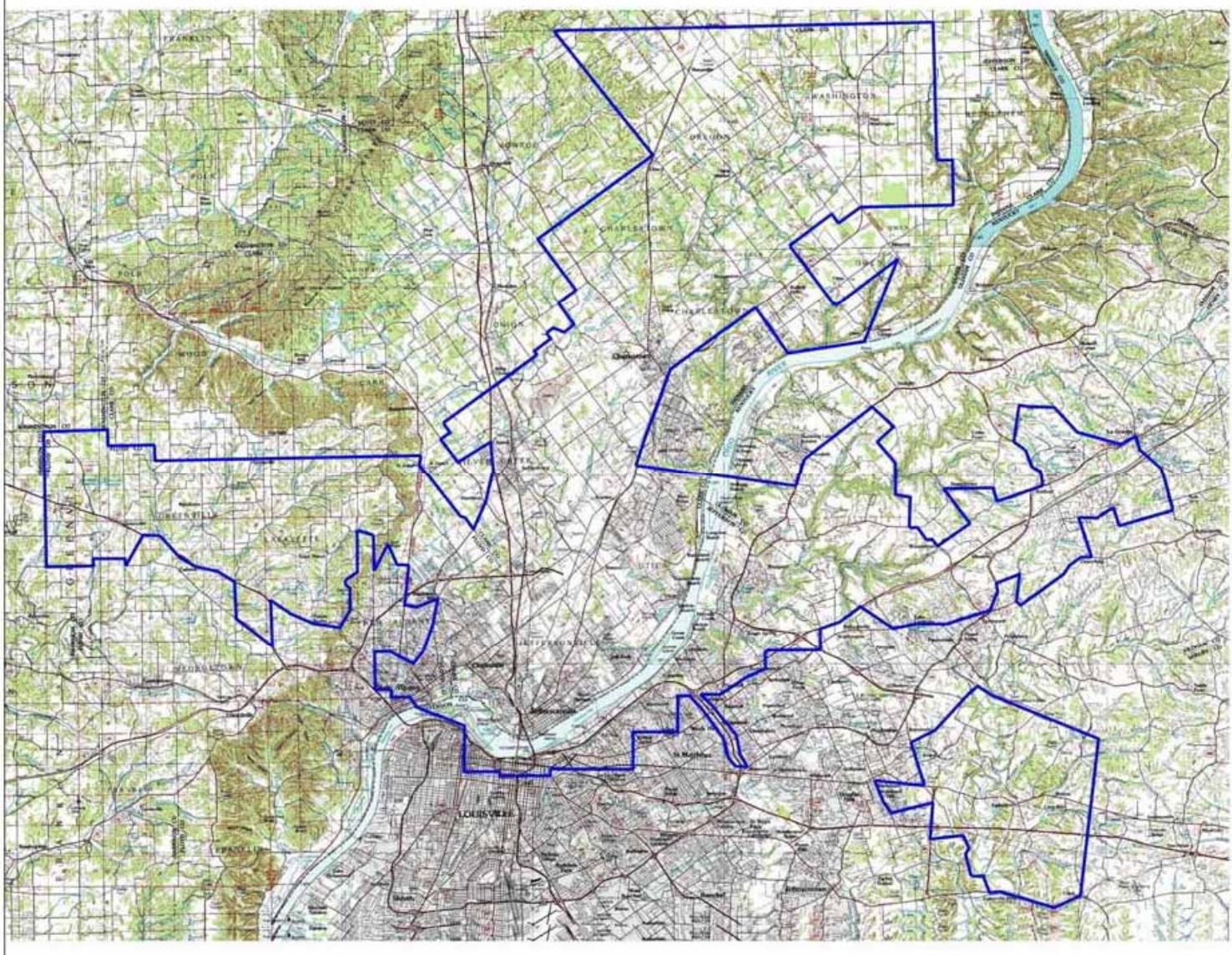


Alternatives Recommended for SEIS

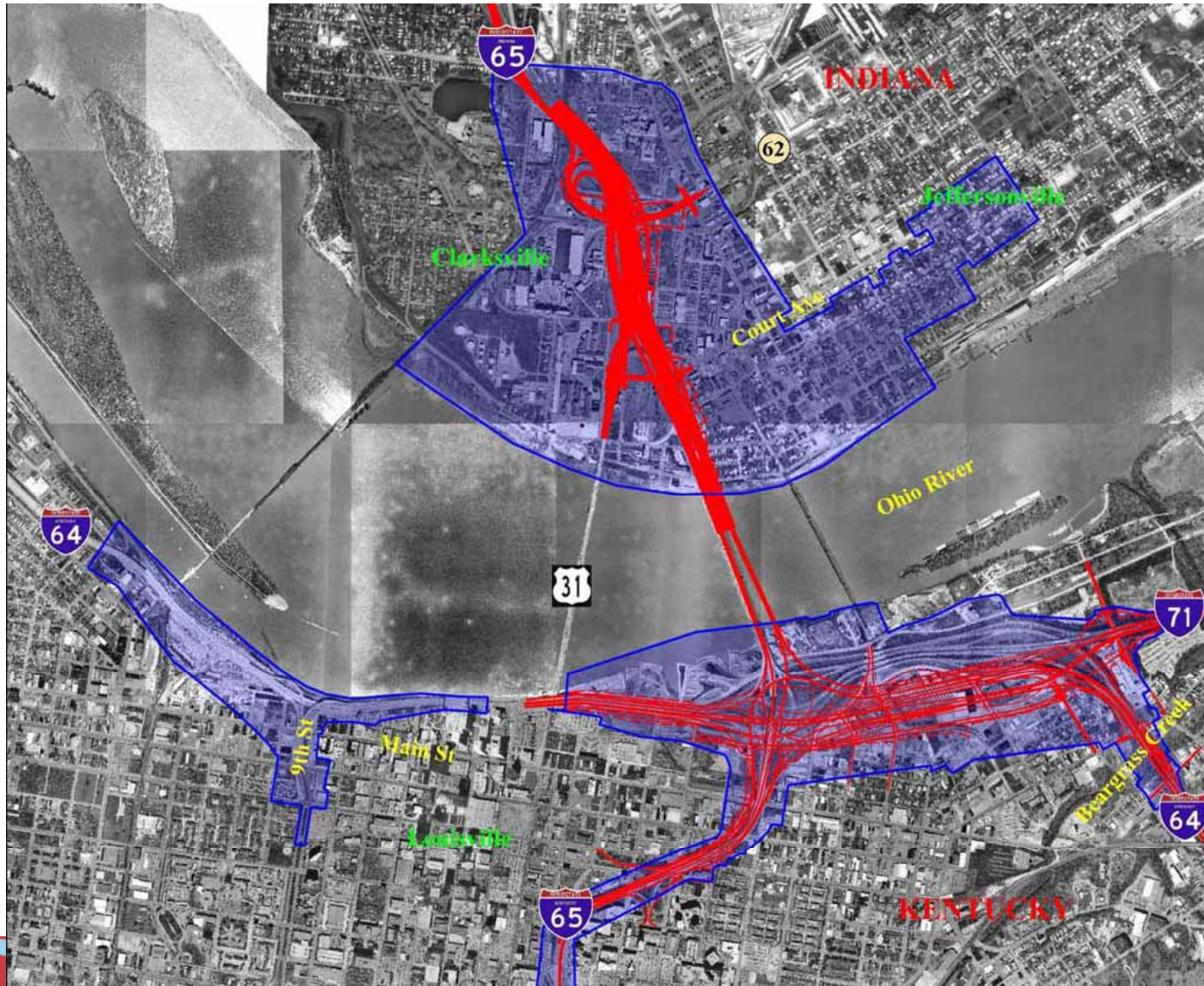
- No-Action
- The Selected Two Bridges/Highway Alternative, as approved in the FEIS/ROD, with tolls
- A modified version of the Selected Two Bridges/Highway Alternative with tolls. Includes:
 - reducing the East End Bridge, roadway, and tunnel from six lanes to four lanes;
 - reconstructing the Kennedy Interchange in-place;
 - removing a pedestrian/bikeway facility from the Downtown Bridge.

6. 2003 AREA OF POTENTIAL EFFECT (APE)

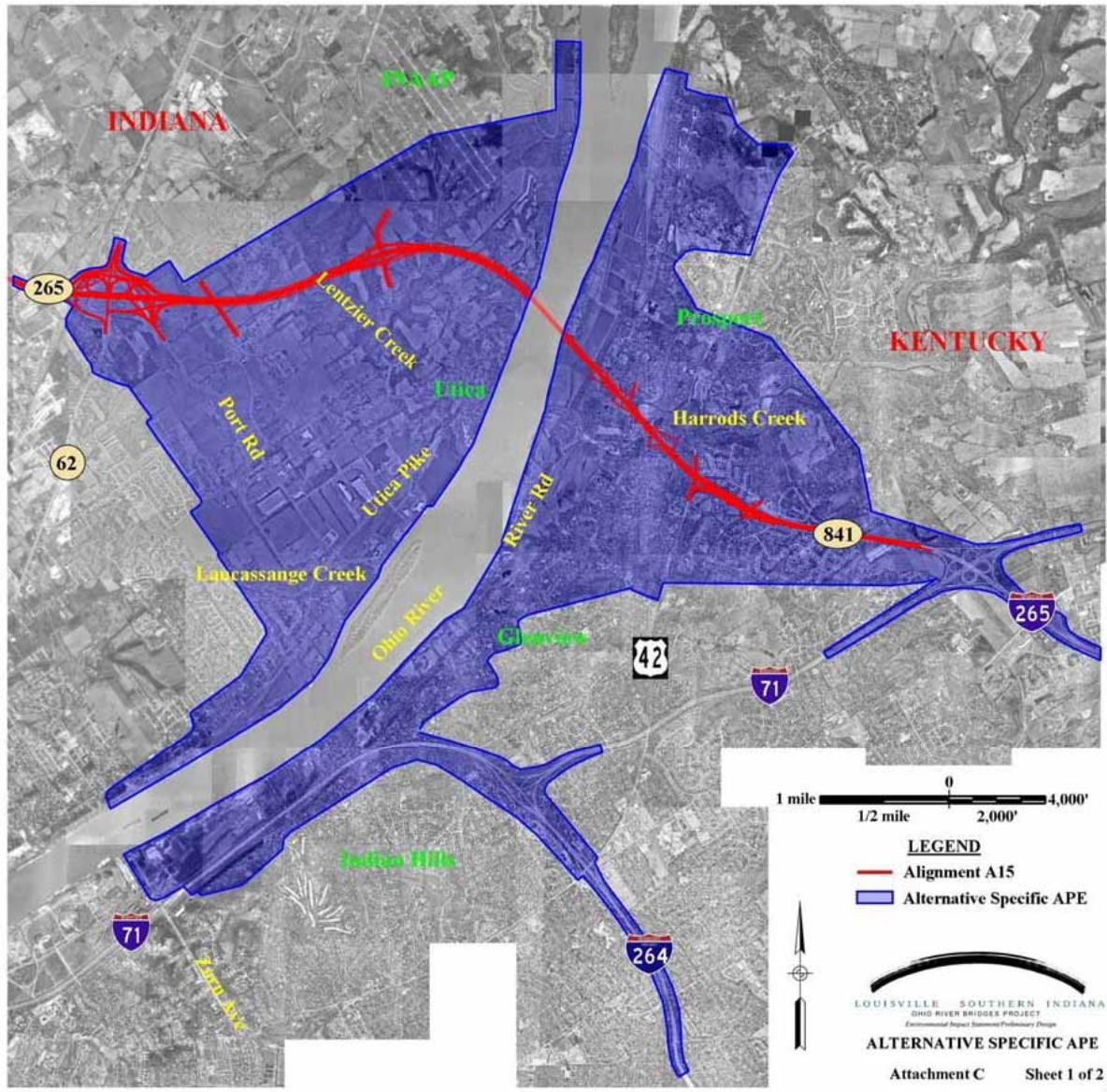
2003 BROAD APE



2003 DOWNTOWN APE



2003 EAST END APE

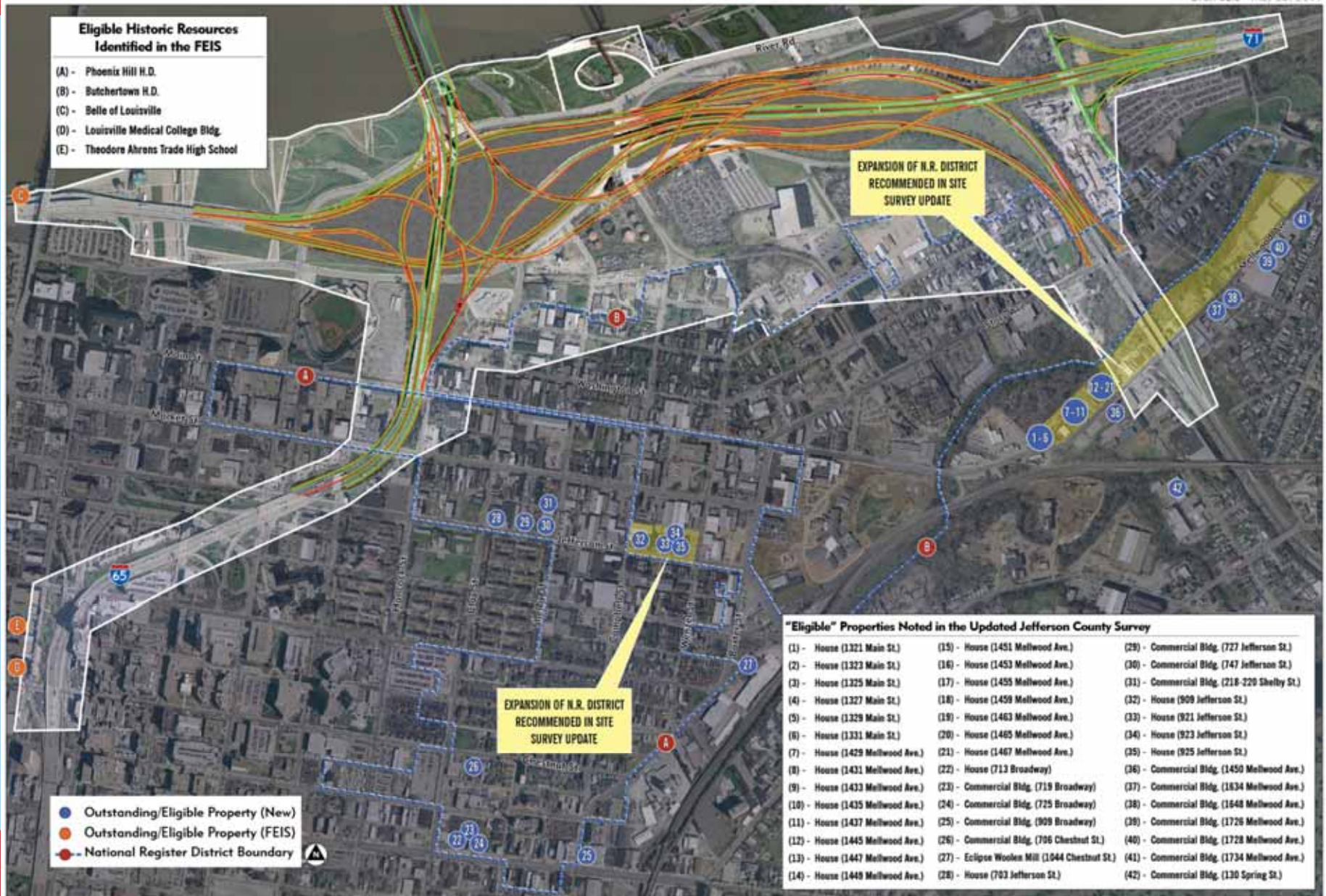


HISTORIC RESOURCES UPDATE

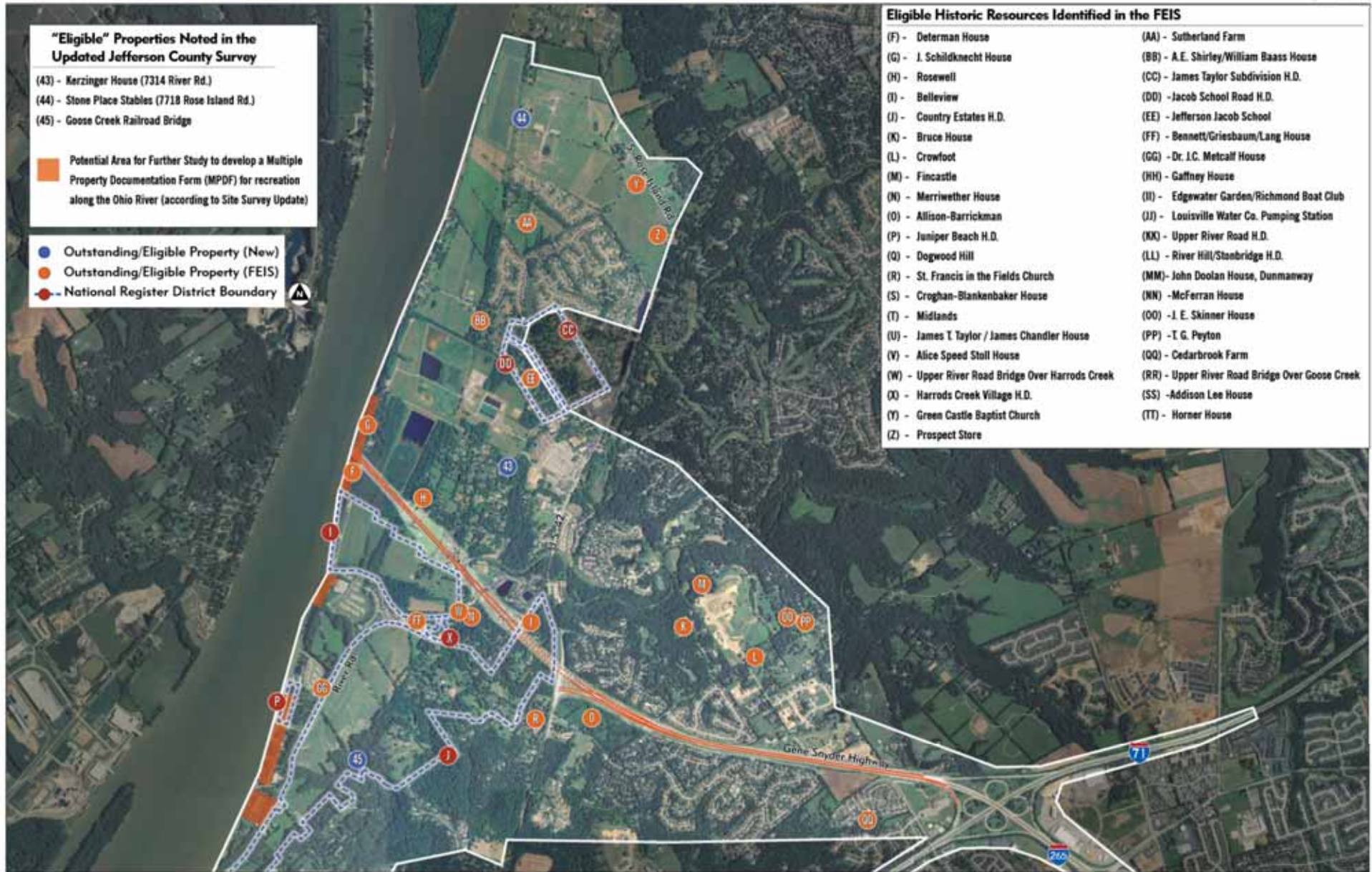


- A Survey Update of Butchertown, Phoenix Hill, Downtown Louisville and River Road (Kentucky)
 - Report #181 jointly administered by the University of Kentucky and the Kentucky Heritage Council
- The Clark County Interim Report Survey Update (Indiana)
 - The Indiana State Historic Architectural and Archaeological Research Database (SHAARD)
- Identified sites listed as "Outstanding" or "Eligible" for the NRHP from each State's respective update
- Identified sites located within or near the original FEIS APE
- Conducted preliminary site investigations and written descriptions for new resources.

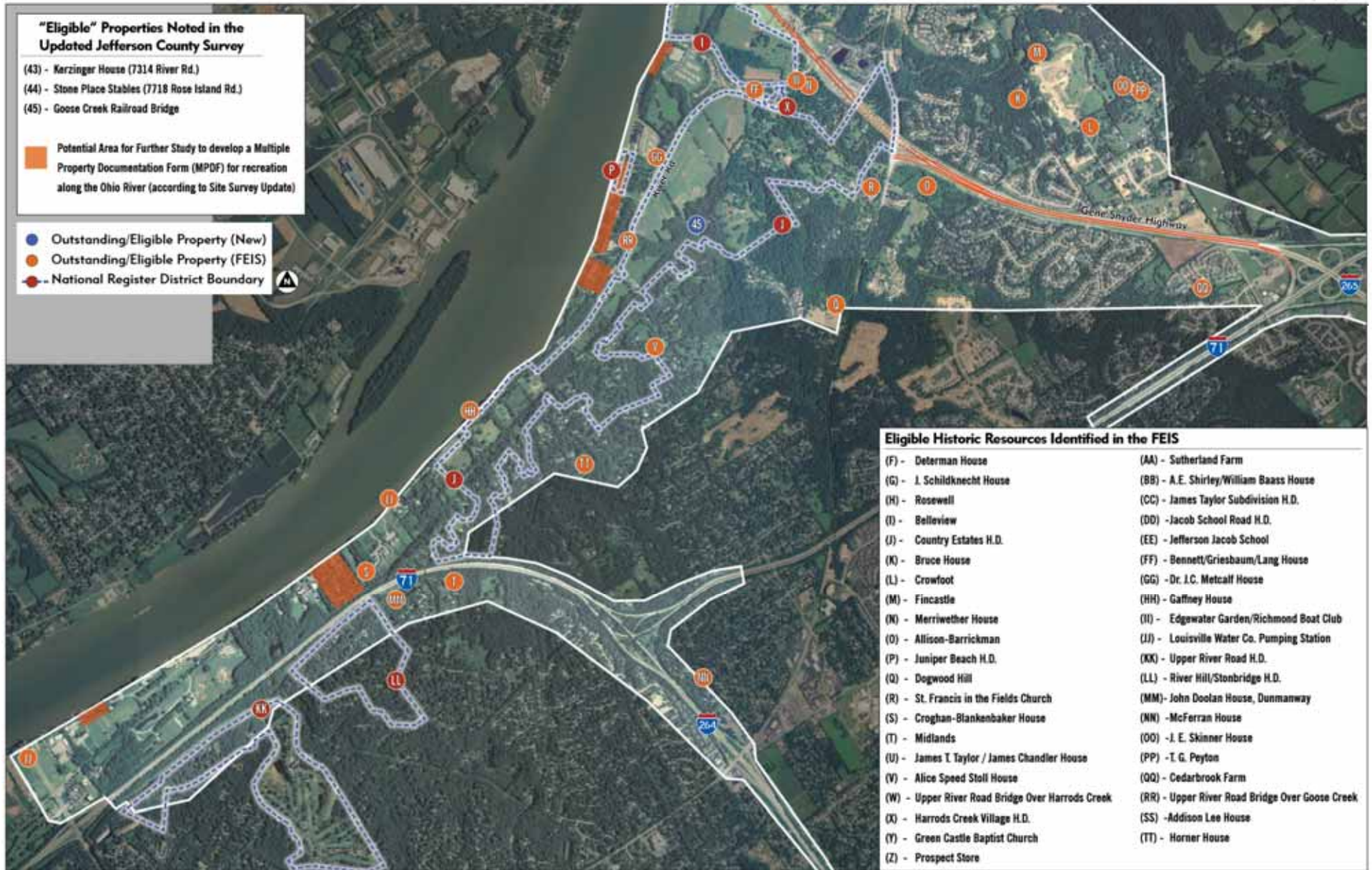
KENTUCKY PROPERTIES UPDATE



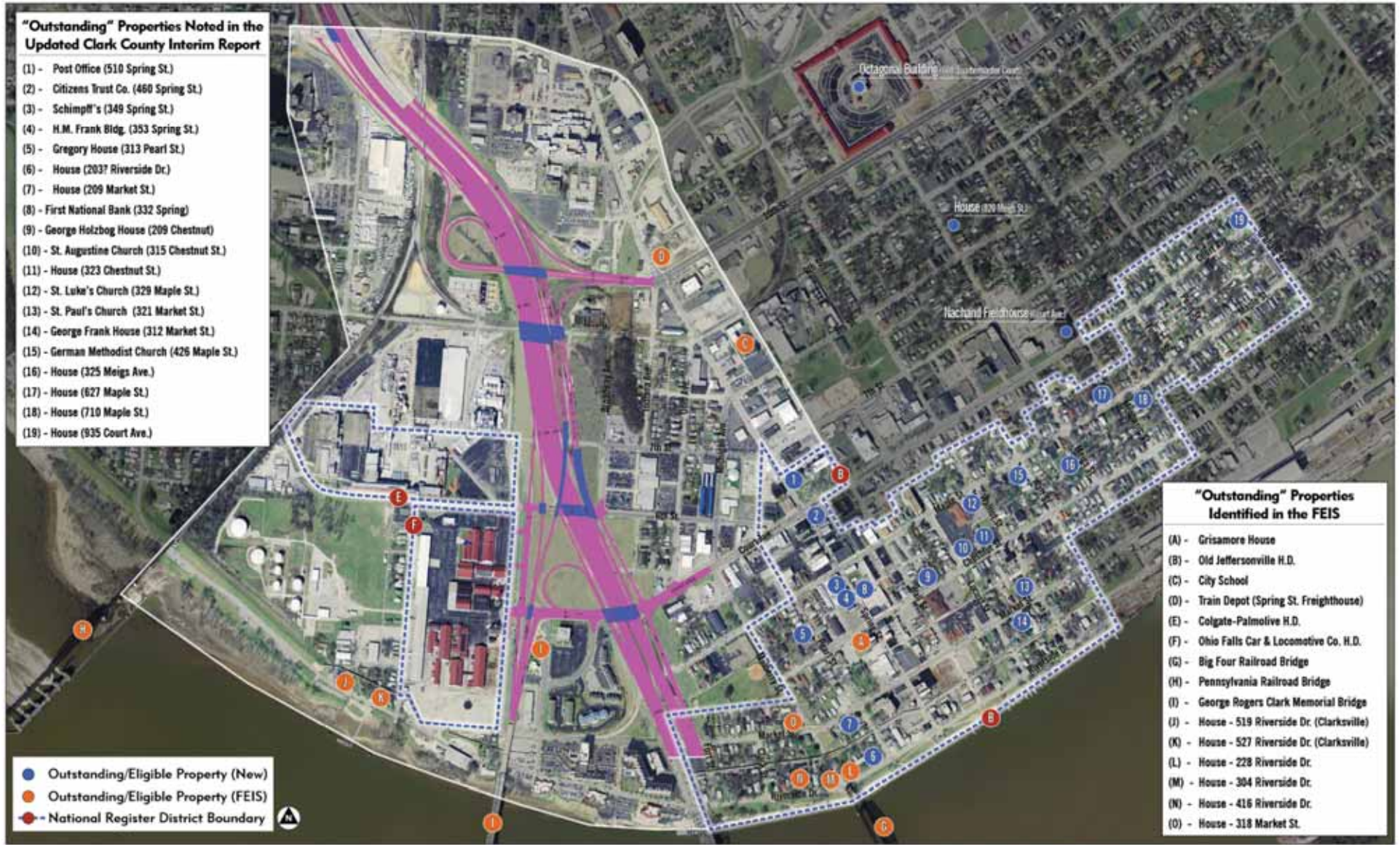
KENTUCKY PROPERTIES UPDATE



KENTUCKY PROPERTIES UPDATE



INDIANA PROPERTIES UPDATE



INDIANA PROPERTIES UPDATE



7. NEXT STEPS

NEXT STEPS

- Traffic modeling and diversion studies are underway at this time.
- Consultation will begin with KY and IN SHPOs on APE. The existing APE will be revised, as needed.
- Consulting parties will be asked to help identify new resources within the existing APE and any areas added.

SECTION 106 STEPS

- Initiate Consultation
- Establish Area of Potential Effect (APE), Identify Historic Properties
- Assess Effects
- Resolve Adverse Effects

ANTICIPATED MEETINGS



- Section 106 Introduction (today)
- Section 106 Identification of Properties
 - Information will be sent out 2 weeks before the meeting, so the parties will have time to consider resources within the revised APE
- Section 106 Effects Coordination
- Section 106 Mitigation Coordination

8. COMMENT AND DISCUSSION PERIOD

Thank you for your participation today!

If you have comments or concerns, please return them by

June 30, 2011

To:

Ms. Janice Osadczuk
Engineering Services Team Leader
Federal Highway Administration - Indiana Division
Room 254, Federal Office Building
575 North Pennsylvania Street
Indianapolis, Indiana 46204