



## Meeting Summary

---

### Section 4 East End Kentucky Area Advisory Team Meeting No. 1 December 2, 2004

---

The initial East End Kentucky Area Advisory Team meeting was held on December 2, 2004 at the Harrods Creek Fire Department. Introductions of the Bi-State Management Team, Community Transportation Solutions-General Engineering staff, the Section 4 Design Consultant Team and Area Advisory Team members were made. An overall project update and section overview was presented, ending with discussion.

The following individuals from the Area Advisory Team were in attendance:

Jim Halvatgis	Bridgepointe Neighborhood Association
Theresa Glye	Bridgepointe Neighborhood Association
Mayor Lawrence Falk	City of Prospect
Ann Simms	City of Prospect
Mayor William Huff	Green Spring
Chief Christopher Aponte	Harrods Creek Fire Protection District
Mohammad Nouri	Louisville Metro Planning and Design Services
Aida Copic	Louisville Metro Planning and Design Services
Jennifer Osborne	Louisville Metro Council – District 7
Kelly Downard	Louisville Metro Council – District 16
Debbie Carroll	Louisville Metro Council – District 16
Kip Eatherly	Louisville Metro Council – District 17
Mark Adams	Louisville Metro Public Works
Henry Mullen	Prospect/Harrods Creek Neighborhood Association
Rev. Robin Jennings	Saint Francis in the Fields Church
Gerald Meurer	Shadow Wood Homeowners Association
Wayne Fulton	The Harbor at Harrods Creek
Kay Ackerson	Transylvania Beach Neighborhood Association
Harold Friedly	Wolf Creek Homeowners Association
Gale Kopczynski	Wolf Pen Community Association
Ron Kopczynski	Wolf Pen Community Association

Other individuals attending:

Mary and Orne Wilson, Gary and Marilyn Werenskjold, Elizabeth Kenney, Blair Matthews, Hunter Louis, and Meme Runyon

Project management present:

Lochner Design Team: Jerry Leslie, Project Manager, Herschel Conner, Randy Essex , Greg Gabbard, Mike Galbraith, Ed Holmes, Warren Iulg, Jim Klein, Mike Piepenburg, Jeff Schlotter, Facilitator, and Debby Taylor

Community Transportation Solutions-General Engineering Consultant (CTS-GEC): Dan Burgess, Richard Cary-Brown, Jim Hilton, Kristen Jordan, David Kroll, Michelle Marcum, Pat Osborne, Christa Turner, Kevin Villier

Others: John Ballantyne – Federal Highway Administration-KY, Bill Gulick – Kentucky Transportation Cabinet, Lee Walker – KY Ombudsman

## 1. **Introductions**

1.1 Jeff Schlotter, Faciliator; Bill Gulick, Kentucky Transportation Cabinet (KYTC), Richard Cary-Brown, Community Transportation Solutions-General Engineering Consultant, Jerry Leslie, Lochner Design Team Project Manager, Area Advisory Team introductions

## 2. **Meeting Guidelines**

2.1 Communication flow, meeting memory, meeting agenda – Jeff Schlotter – H.W. Lochner

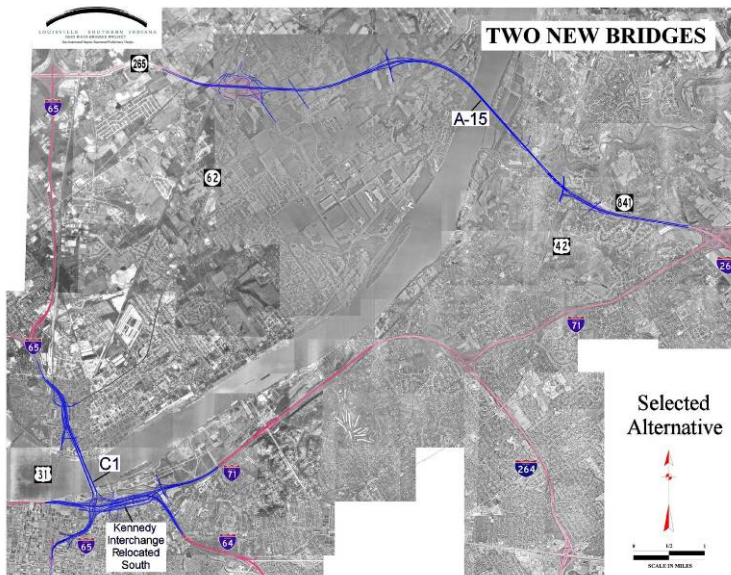
## 3. **Project Update and Public Involvement Overview**

Overall Project Update - Richard Cary-Brown, Community Transportation Solutions-General Engineering Consultant (CTS-GEC)

3.1 Area Advisory Team (AAT) Guidelines

- Environmental Impact Statement Phase Participation – Completed in 2003
- Design Phase Participation – Begun in 2004
- Area Advisory Team Representatives
- Meeting Format
- Comments
- Frequency of Meetings

3.2 The Two-bridge Decision



### 3.3 Project Update and Process

- Six Sections: An overview of the six sections was provided.
  - Section 1 - Kennedy Interchange
  - Section 2 - Downtown Bridge
  - Section 3 - Downtown Indiana Approach
  - Section 4 - East End Kentucky Approach
  - Section 5 - East End Bridge
  - Section 6 - East End Indiana Approach



### 3.4 Organizational Structure

A chart illustrating the connection between the Bi-State Management Team, the general engineering consultant firm, the project design sections and their relationship with the historic preservation and area advisory teams were explained.

### 3.5 Section Design Consultants

- Section 1 – Kennedy Interchange
  - **Kentucky Transportation Associates (KTA)**
- Section 2 – Downtown Bridge
  - **Michael Baker Jr. Inc.**
- Section 3 – Downtown IN Approach
  - **Butler, Fairman and Seufert, Inc.**
- Section 4 – East End KY Approach
  - **H.W. Lochner**
- Section 5 – East End Bridge
  - **Parsons Brinckerhoff Quade and Douglas**
- Section 6 – East End IN Approach
  - **Indiana Approach Partners**

### 3.6 Schedule

- Final Environmental Impact Statement – April 2003
- Record of Decision – September 2003
- Community Transportation Solutions – General Engineering Consultant selected – July 2003
- Section Designers Selected – November 2003 to November 2004
- Right-of-way Plans 2006
- Construction Start – Late 2007 or 2008

#### **4. Design Process and AAT Involvement**

##### 4.1 Public Input Methods

- Individuals
- Community Groups
- Area Advisory Teams
- Historic Preservation Advisory Teams
- Regional Advisory Committee
- Ombudsman
- Web site – [www.kyinbridges.com](http://www.kyinbridges.com)
- Hot line
- E-mail

##### 4.2 Public Input Organizations

- Historic Preservation Advisory Teams (HPAT)
  - Indiana HPAT
  - Kentucky HPAT
- Area Advisory Teams (AAT)
  - Four Geographic Areas
- Regional Advisory Committee (RAC)
  - One Project-wide

##### 4.3 The Role of Public Input Organizations

- Historic Preservation Advisory Teams (HPAT)
  - Historic Preservation Plans
  - MOA/ROD Commitments
- Area Advisory Teams (AAT)
  - Interchange Refinements
  - Context Sensitive Solutions (Aesthetic Treatments)
  - Bridge Type Selection Process
- Regional Advisory Committee (RAC)
  - Project-wide Issues
  - Bridge Type Selection Process

4.4 Bridge Type Selection Flowchart was discussed

#### **5. Design Section 4 Overview**

Jerry Leslie, Project Manager, Lochner Design Team

##### 5.1 Project Approach Section 4

##### 5.2 Section 4 Design Team

Project staffing of the Louisville Bridges East End Design, Extension of I-265 from I-71 to Proposed Ohio River Bridge was discussed.

### 5.3 Lochner Design Team Members

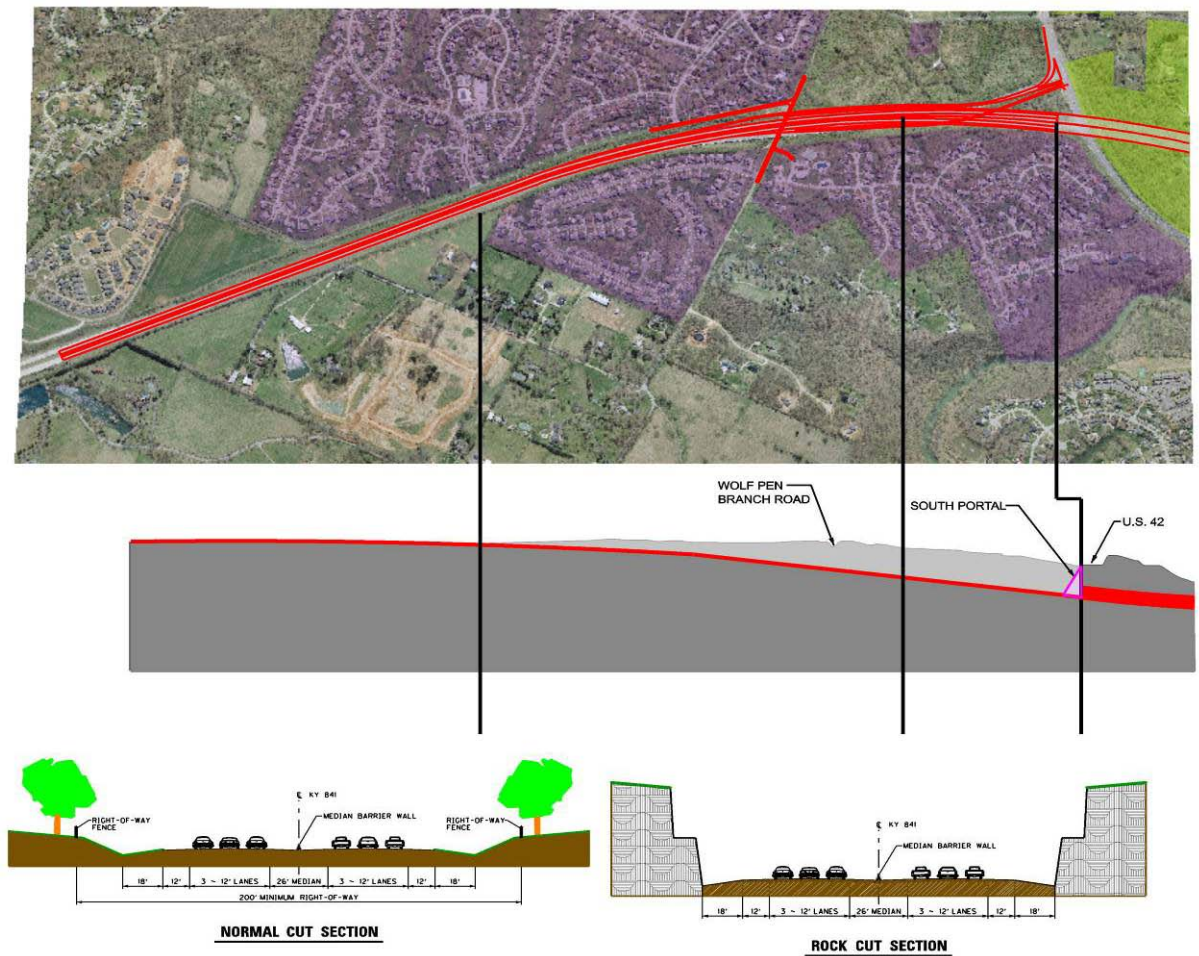
\* Denotes DBE/SBE/SBA Team Member

- HHE: Hall Harmon Engineers\*
- TRC: Third Rock Consultants, LLC\*
- B&A: Burry & Amos\*
- KSW: K. S. Ware & Associates, LLC\*
- HDDS: HDDS, Inc.\*
- ADI: Advanced Digital Imaging\*
- TLI: Toni Levy, Inc.\*
- V&M: Vaughn & Melton Consulting Engineers
- HMM: Hatch Mott MacDonald
- GRW: GRW, Inc.
- LK: Lardner Klein, PSC
- FMSM: Fuller, Mossbarger, Scott & May Engineers, Inc.
- JMA: John Milner & Associates
- CH2: CH2M Hill
- HWL: H.W. Lochner, Inc.

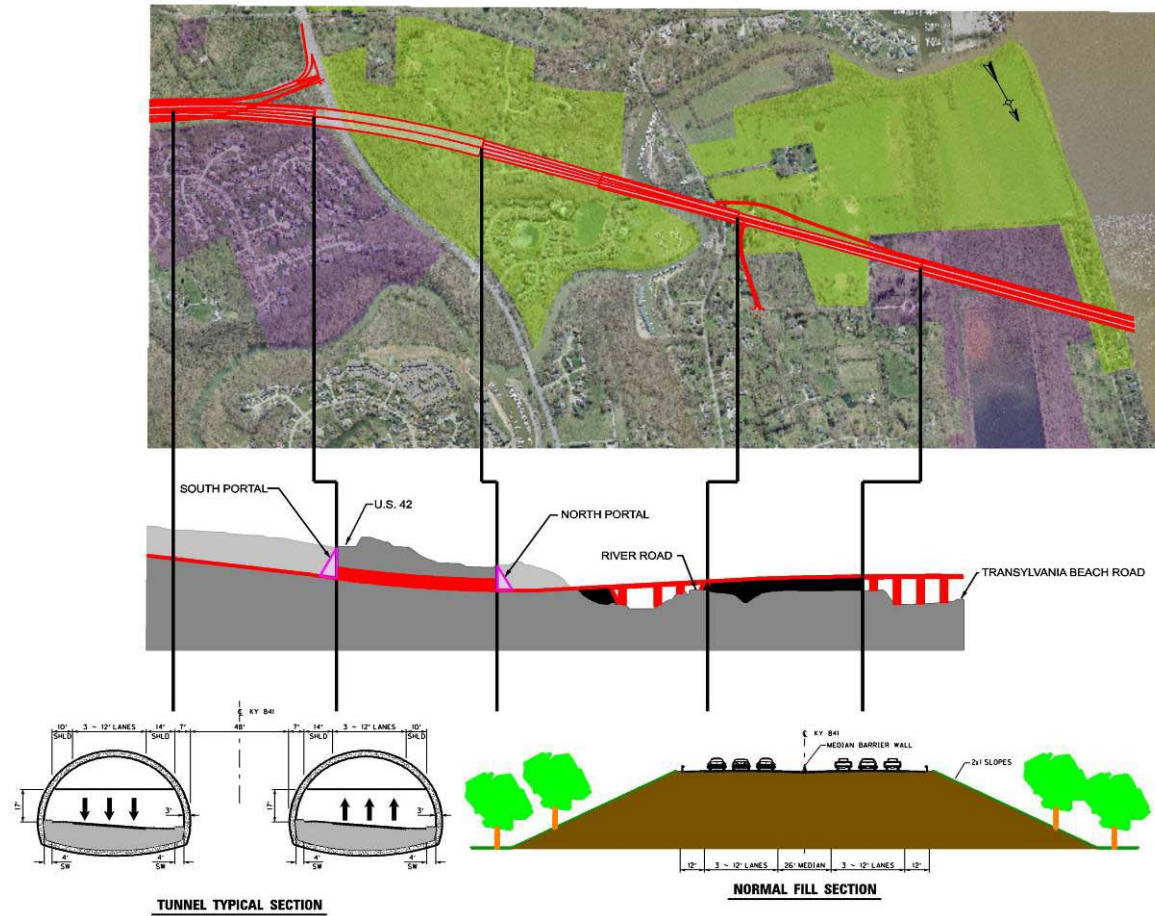
5.4 Lochner Design Team history, qualifications and previous experience was discussed.

### 5.5 Roadway and Tunnel Plans

- Cut Section Diagram



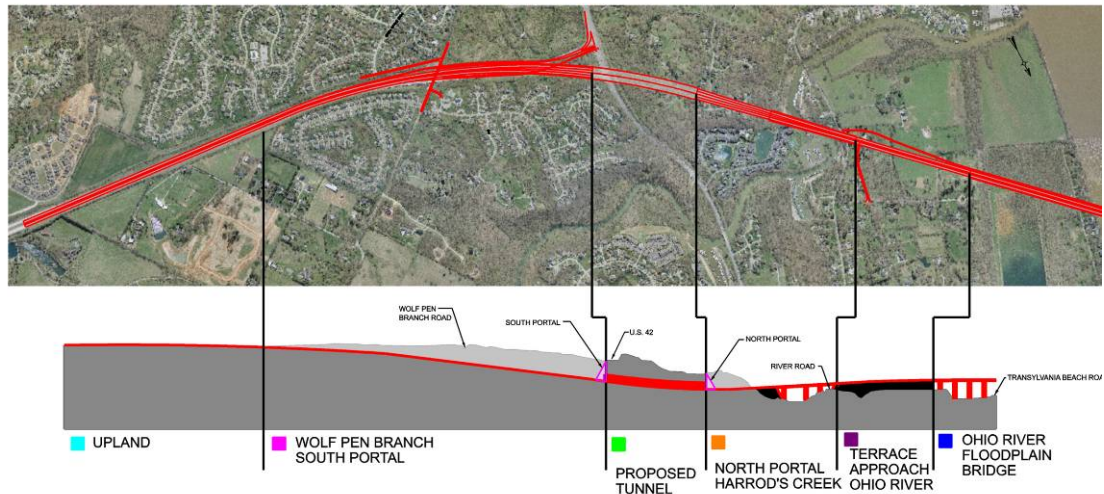
• Tunnel and Fill Section



6. Approach to Project

6.1 Six Character Areas

- Upland
- Wolf Pen Branch South Portal
- Proposed Tunnel
- North Portal Harrod's Creek
- Terrace Approach Ohio River
- Ohio River Floodplain Bridge



6.2 Design Issues and an overview of area specific preservation issues and landscape examples were illustrated and discussed.

- Visual screening
- Sound
- Roadside Drainage
- Overhead Transmission Line
- Construction Activities
  - Blasting/Vibration
  - Dust/Air Quality
  - Noise
  - Lighting
  - Construction Duration
  - Maintenance of Traffic During Construction
  - Construction Working Hours
- Signature entry from Kentucky
- Lighting
- Right of Way Issues

## 7. Interactive Exercise

(Results on enclosed attached document: Interactive Exercise results.)

## 8. Discussion

**Following is a summary of discussion during and following the presentation**

Regular Text: Attendee comment or question

*Italicized Text: Project Team response*

*Post-Meeting Addition: Indicates additional information added after the meeting.*

### Summary of Comments during Introduction of Ground Rules:

(List of ground rules are in attached separate document: Group Memory Notes):

1C. I don't think you should cut off the discussion if we're running out of time. If it's a topic that we're really interested in discussing, then I don't think you should cut off the conversation because we're out of time.

2C. I second that comment. I don't think we should end a conversation just for the sake of staying on the agenda topics. If we're discussing an important topic then I think we should be able to continue that conversation and move the other agenda items to the next meeting.

*1&2R. I agree with you. If you, as a group, decide that you'd like to continue a conversation after the meeting conclusion time, then we'll continue. And, if you'd like to continue a particular conversation in lieu of continuing on with the agenda, then we'll move those agenda items to the next meeting's agenda. We want to the meeting to be guided by the issues you feel are important.*

3C. It would be very helpful for you to provide graphics to us.

*3R. Ok, we'll try to provide you with that.*

*These meetings are to share information with you and get feedback. We want you to tell us what is working and what is not working. If you want something additional to what we're providing, please let us know. Or, if there are other ways you'd like us to communicate information to you, let us know that also.*

#### Summary of Discussion during Q&A

(Results of the Interactive Exercise, which preceded the discussion, are attached in a separate document: Group Memory Notes.)

4Q. Are there plans to connect the bike path from US 42 to River Road?

*4R. A bike path from River Road to US 42 is not proposed with this project.*

5C. 3-D presentations would be helpful.

*5R. We're working on preparing those.*

6Q. Regarding Area Advisory Teams, are there individuals who are members of more than one Team? Is there a "Group 5"?

*6R. There is no "Group 5," but, in addition to the four Area Advisory Teams, there is a Regional Advisory Committee that provides feedback on bridge design concepts and regional issues. Those members consist of community leaders from organizations and government agencies that have regional interests. The AATs are made up of neighborhood and local organizations that have area-specific interests.*

7C. The faster that visuals can be developed, the better. They help so much in understanding the roadway concepts.

8C. I hope you'll consider the priorities of each of the sections an important topic as well.

*8R. The Regional Advisory Committee looks at and provides feedback about regional issues relating to the project.*

9C. It's important that we get updated on the other section work as well.

10C. (In reference to the comment above.) Could you send us a written update of the other sections' work? That way we can read it outside the meeting on our time. We have the responsibility of staying informed and this way doesn't use up meeting time.

*9&10R. We can look into doing that.*

11C. Please consider advance purchasing [of properties needed for right-of-way] in Shadow Wood. We'd like to go ahead and get this out of the way as soon as possible.

12Q. How long will work continue with the current funding? Based on the current state and federal budgets, is it wise to move forward if funding is uncertain? The state hasn't passed a budget yet and the transportation bill has yet to be passed. Should we begin work on this project with the possibility of work being interrupted because funding isn't available?

*12R. If funding continues to be available at the rate that it is currently, we won't have any problems funding the project to the right-of-way phase, and possibly including it. You would be hard-pressed to find any project of this magnitude that began after funding for all the phases was available.*